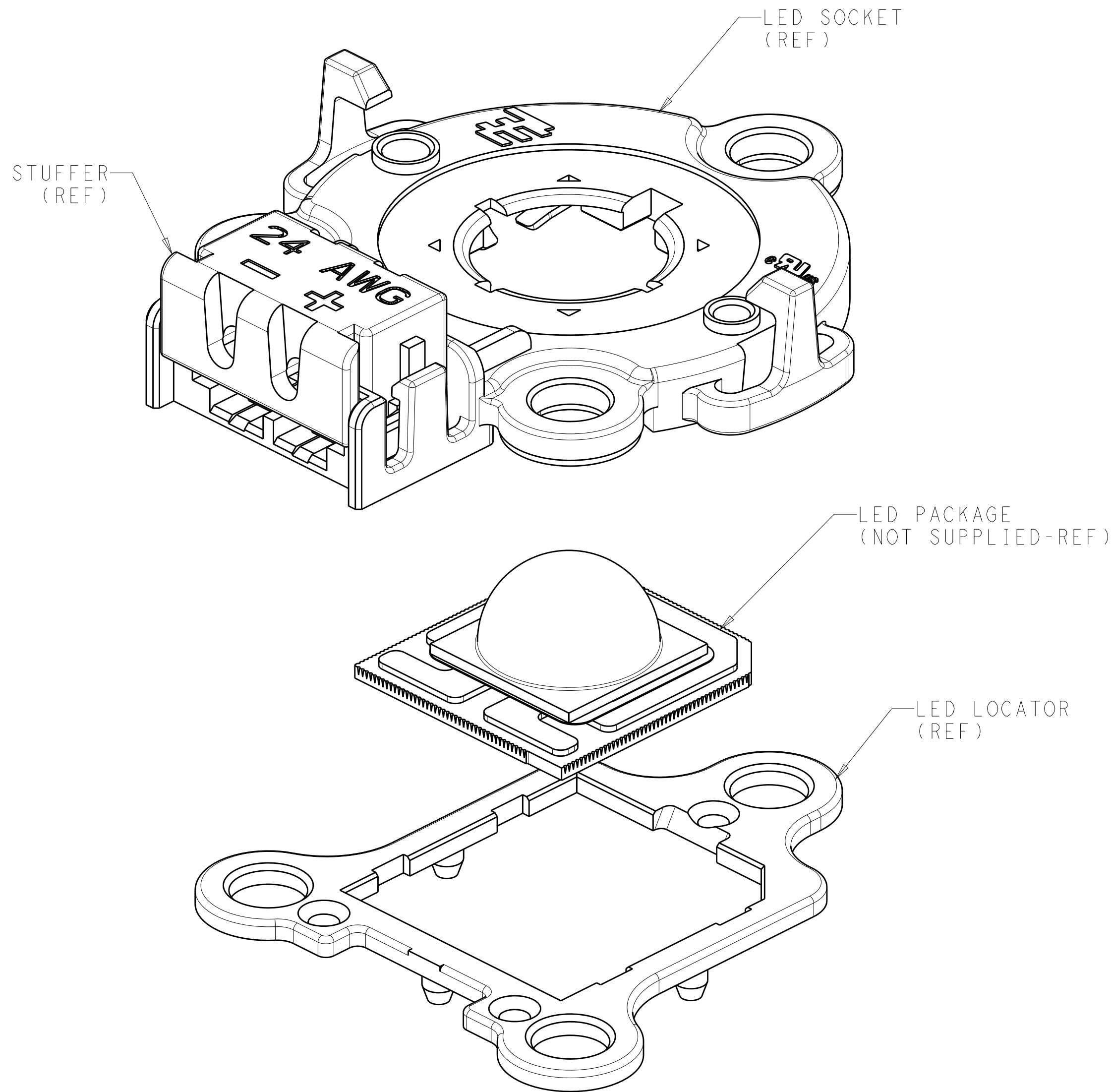


LOC	DIST	REVISIONS					
		P	LTR	DESCRIPTION	DATE	DWN	APVD
-	-		1	PROPOSAL	18SEP2010	APB	-
			2	ADDED -1 P/N TO BOM, ADDED DRAWING VIEWS	26JAN2011	RB	RN
			3	NOTE 7 DELETED	18FEB2011	RB	RN



EXPLODED VIEW WITH LED SHOWN
SCALE 6:1




TYCO ELECTRONICS
CONFIDENTIAL
AND PROPRIETARY

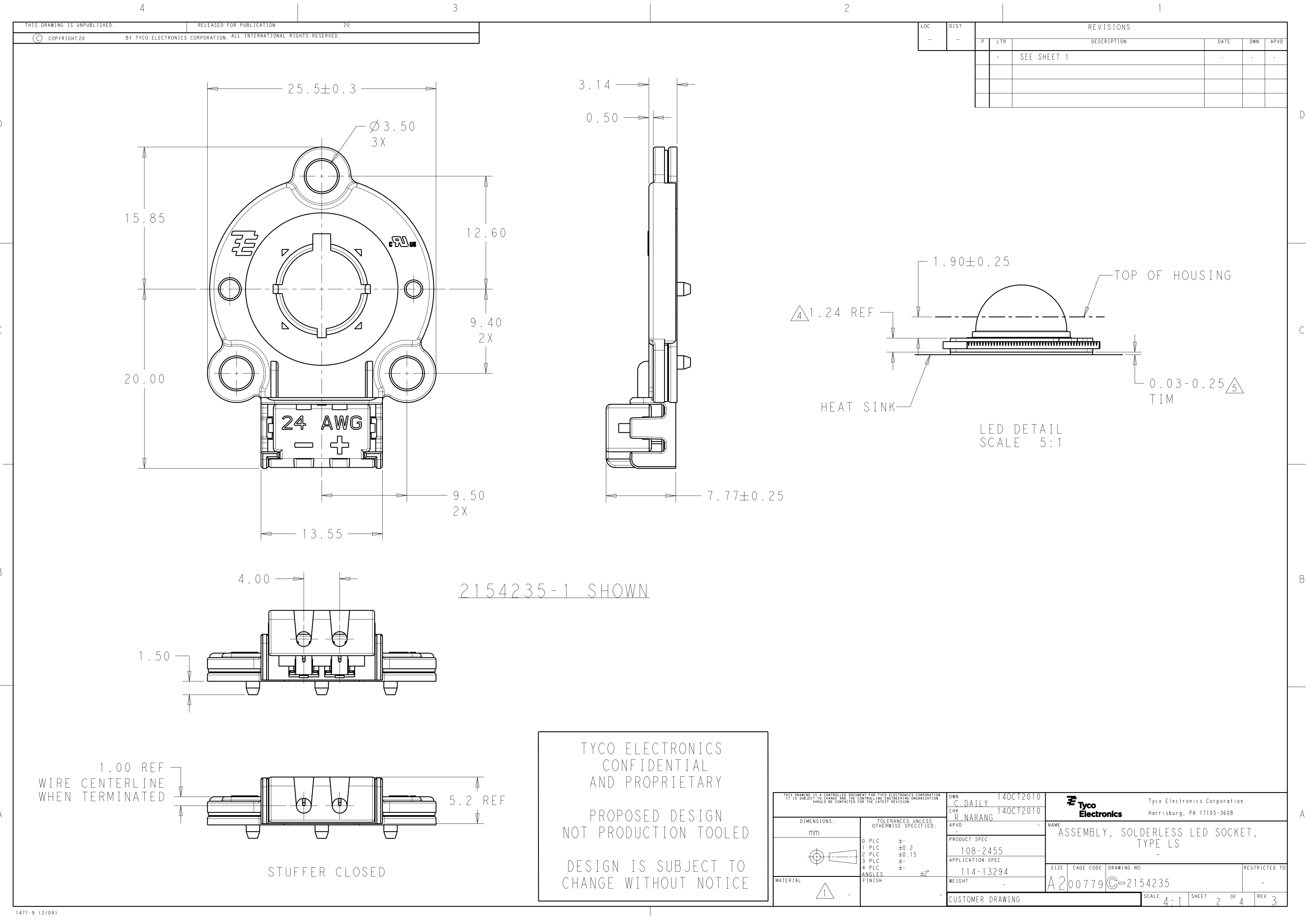
PROPOSED DESIGN
NOT PRODUCTION TOOLED

DESIGN IS SUBJECT TO
CHANGE WITHOUT NOTICE

1. MATERIALS AND FINISH:
 - HOUSING: PBT-GF, COLOR: NATURAL
 - LED LOCATOR: PBT-GF, COLOR: NATURAL
 - STUFFER: PBT-GF, COLOR: NATURAL
 - IDC CONTACTS: COPPER ALLOY
 - FINISH: GOLD IN LED INTERFACE WITH
 - TIN OVER NICKEL BALANCE
 - THERMAL SPRING: STAINLESS STEEL
2. MUST COMPLY WITH DIRECTIVE 2002/95/EC (ROHS)
3. THIS PRODUCT HAS NOT COMPLETED VALIDATION TESTING
4. REFER TO LUMILEDS LED DATASHEET
FOR LED DIMENSIONS
5. REFER TO LUMILEDS LED DATASHEET
FOR RECOMMENDED THERMAL INTERFACE MATERIALS
6. RECOMMENDED SCREW SIZE: M3 OR #4.
TORQUE SCREWS TO 2.5 in-lbf TO 4.0 in-lbf

SOCKET ASSEMBLY W/ OPTICS LATCH	2154235-2
SOCKET ASSEMBLY W/O OPTICS LATCH	2154235-1
DESCRIPTION	PART NO.

THIS DRAWING IS A CONTROLLED DOCUMENT FOR TYCO ELECTRONICS CORPORATION IT IS SUBJECT TO CHANGE AND THE CONTROLLING ENGINEERING ORGANIZATION SHOULD BE CONTACTED FOR THE LATEST REVISION.		DWN 140CT2010 C. DAILY		 Tyco Electronics Corporation Harrisburg, PA 17105-3608	
		CHK 140CT2010 R. NARANG			
DIMENSIONS:		TOLERANCES UNLESS OTHERWISE SPECIFIED:		NAME ASSEMBLY, SOLDERLESS LED SOCKET, TYPE LS -	
mm					
		0 PLC ± 1 PLC ±0.2 2 PLC ±0.15 3 PLC ± 4 PLC ± ANGLES ±2°			
MATERIAL		FINISH			
		WEIGHT -		SIZE A2 CAGE CODE 00779 DRAWING NO C-2154235 RESTRICTED TO -	
CUSTOMER DRAWING				SCALE 4:1 SHEET 1 OF 4 REV 3	




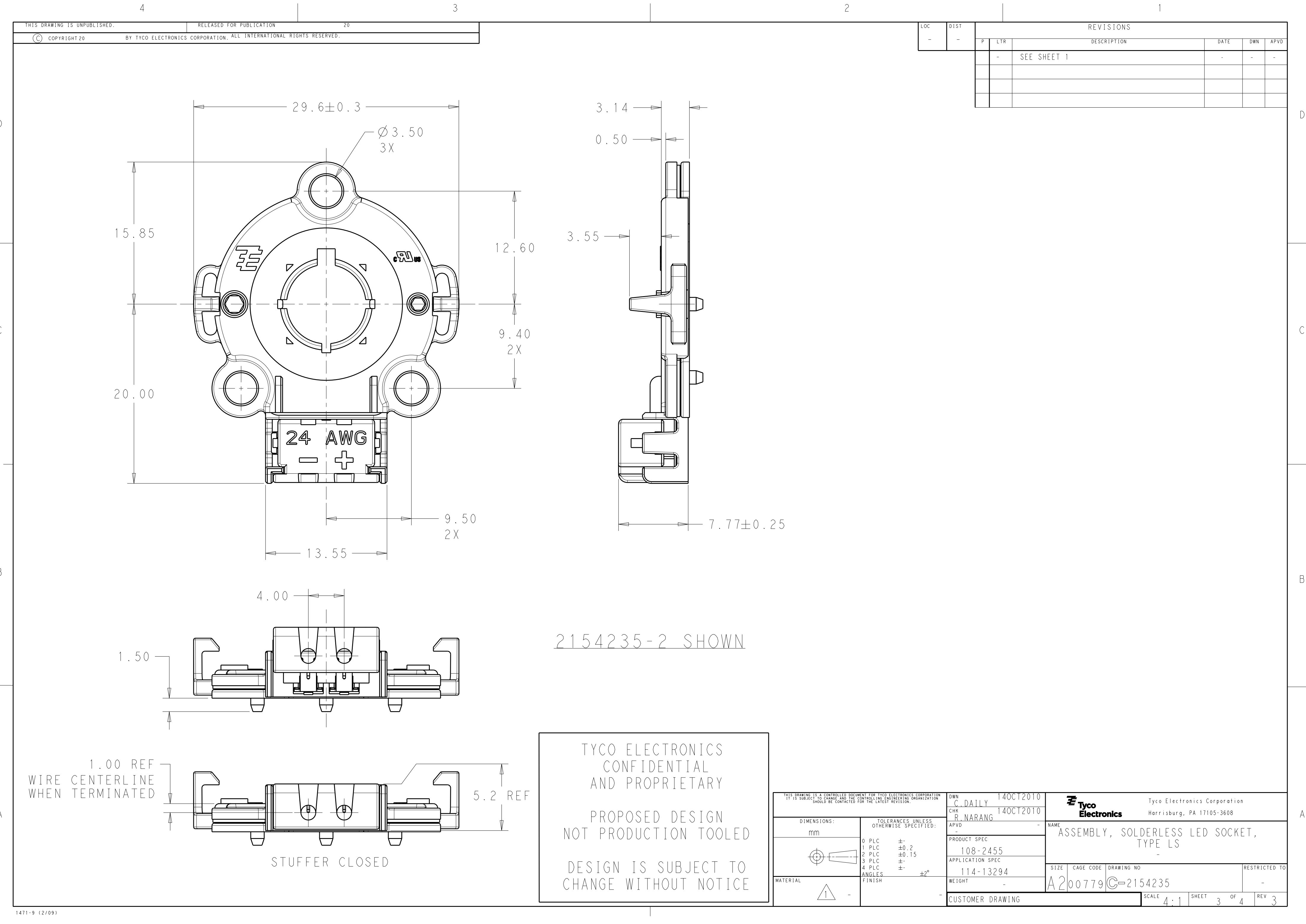
LOC		DIST		REVISIONS			
P	LTR	DESCRIPTION		DATE	DWN	APVD	
-	-	SEE SHEET 1		-	-	-	

TYCO ELECTRONICS
CONFIDENTIAL
AND PROPRIETARY

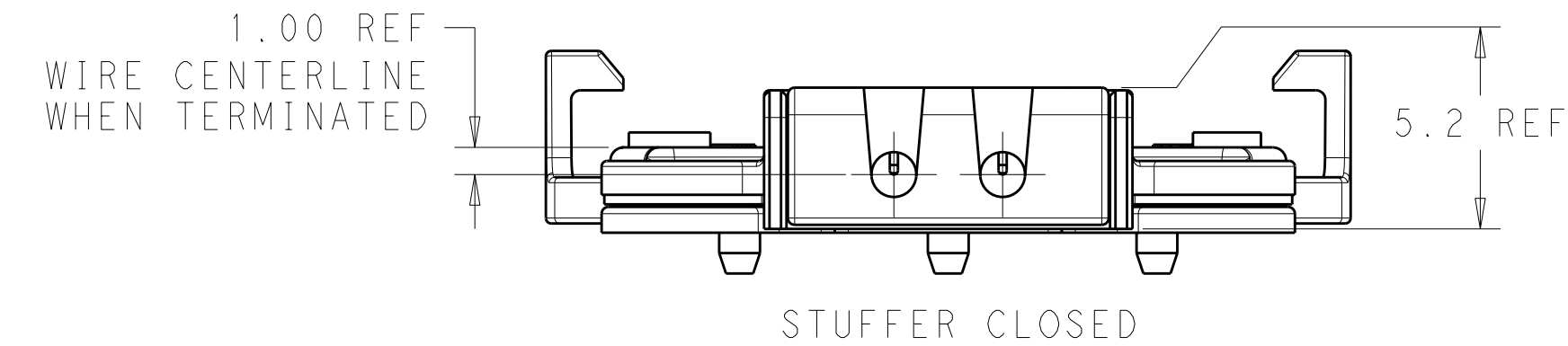
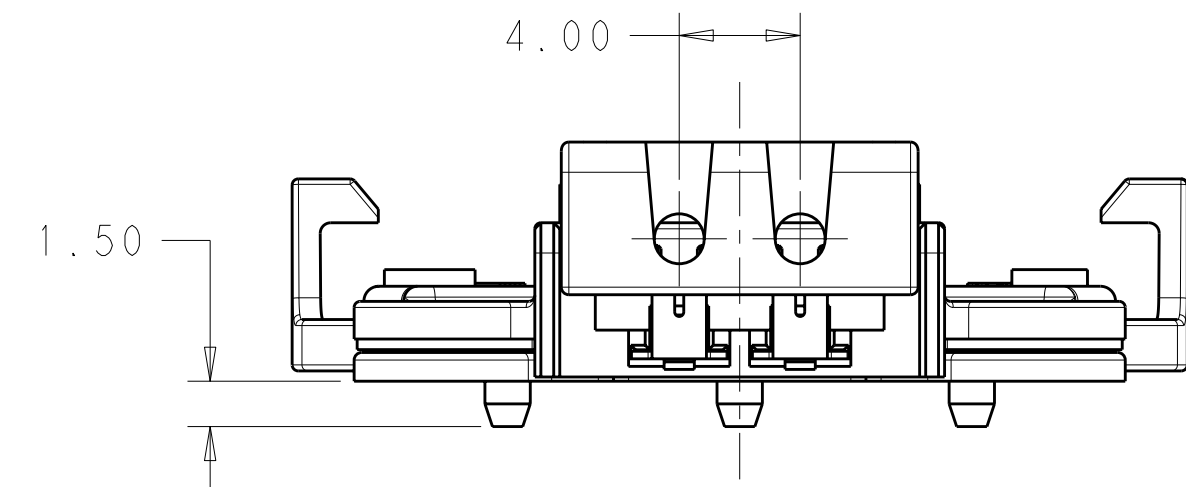
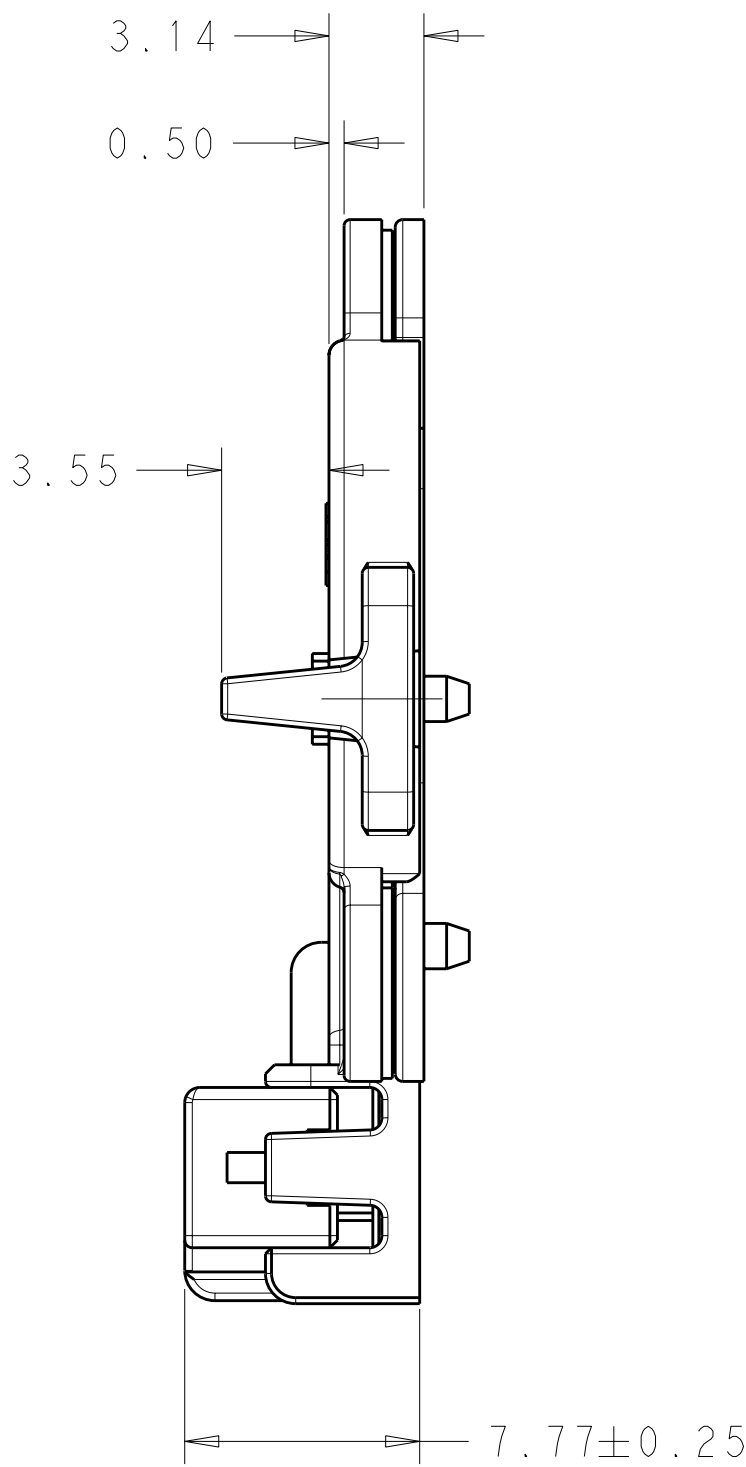
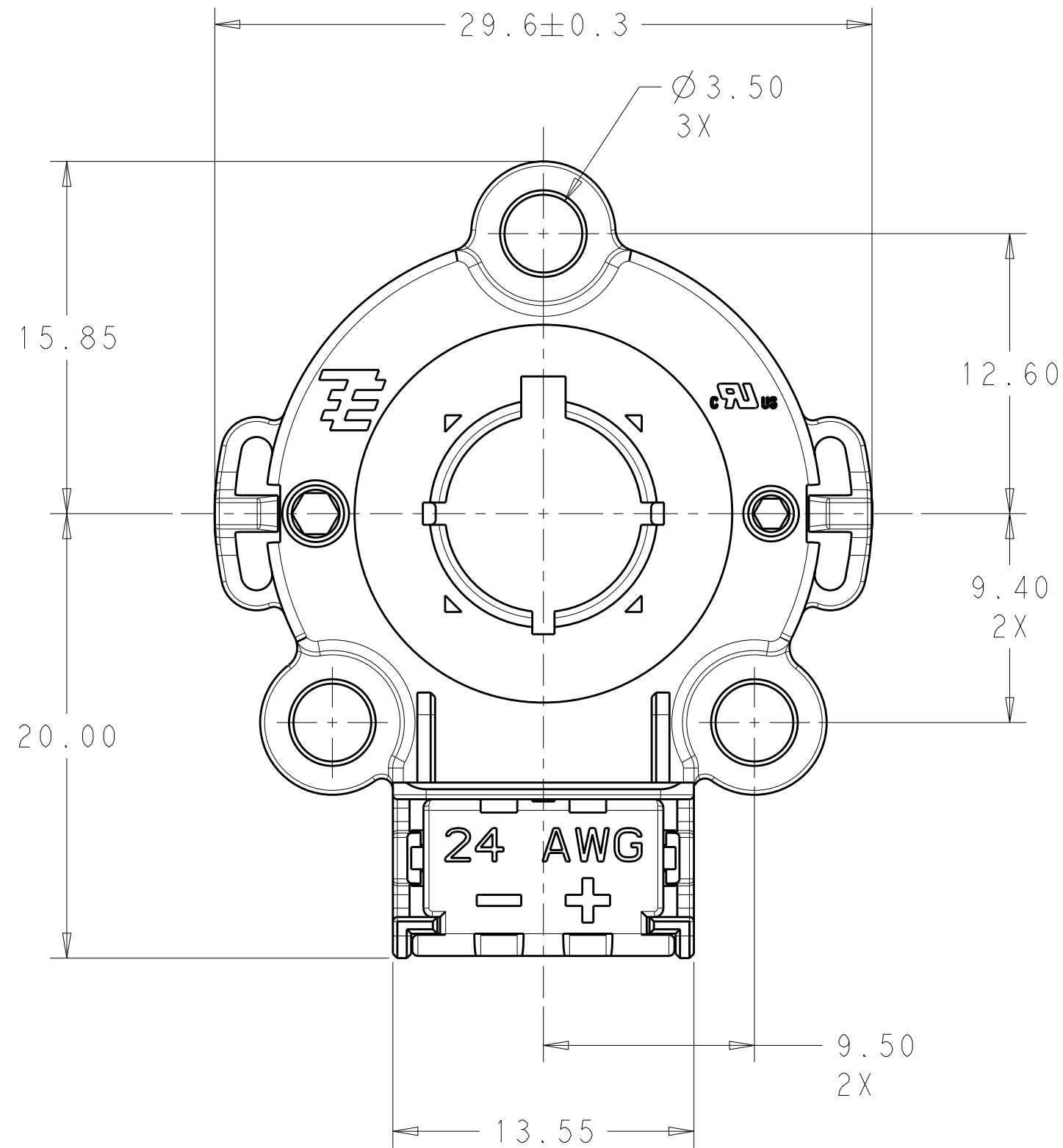
PROPOSED DESIGN
NOT PRODUCTION TOOLED

DESIGN IS SUBJECT TO
CHANGE WITHOUT NOTICE

THIS DRAWING IS A CONTROLLED DOCUMENT FOR TYCO ELECTRONICS CORPORATION. IT IS SUBJECT TO CHANGE AND THE CONTROLLING ENGINEERING ORGANIZATION SHOULD BE CONTACTED FOR THE LATEST REVISION.				DWN	14OCT2010	 Tyco Electronics Corporation Harrisburg, PA 17105-3608	
				CHK	14OCT2010		
				APVD	-	NAME	
				PRODUCT SPEC	-		
				APPLICATION SPEC	108-2455	SIZE	
				WEIGHT	114-13294		
				CUSTOMER DRAWING	-	CAGE CODE	
					-	DRAWING NO	
					-	RESTRICTED TO	
					-	SCALE	
					-	SHEET	
					-	OF	
					-	REV	
					-	3	



LOC		DIST		REVISIONS					
P	LTR	DESCRIPTION				DATE	DWN	APVD	
-	-	SEE SHEET 1				-	-	-	



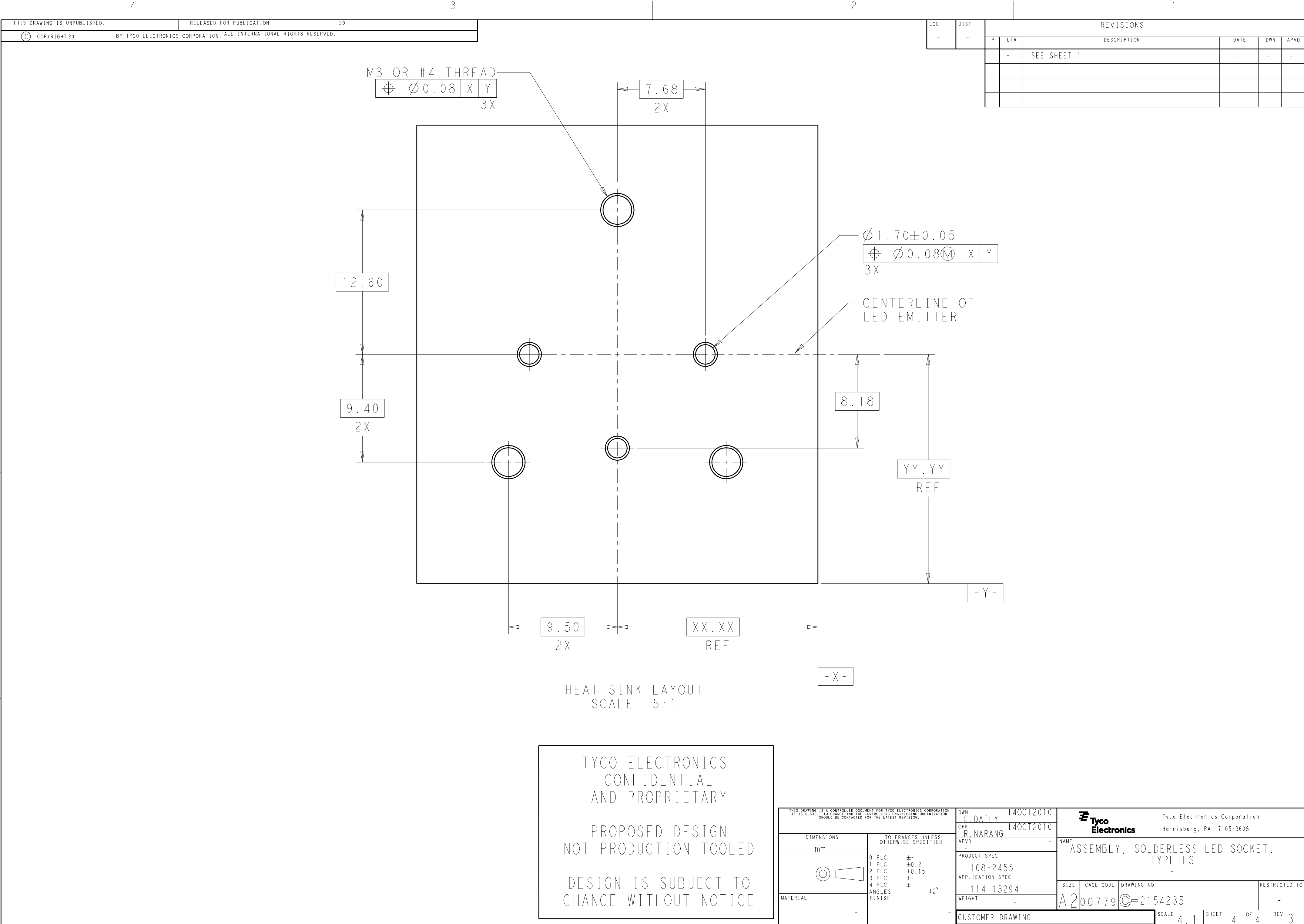
2154235-2 SHOWN

TYCO ELECTRONICS
CONFIDENTIAL
AND PROPRIETARY

PROPOSED DESIGN
NOT PRODUCTION TOOLED

DESIGN IS SUBJECT TO
CHANGE WITHOUT NOTICE

THIS DRAWING IS A CONTROLLED DOCUMENT FOR TYCO ELECTRONICS CORPORATION. IT IS SUBJECT TO CHANGE AND THE CONTROLLING ENGINEERING ORGANIZATION SHOULD BE CONTACTED FOR THE LATEST REVISION.		DWN C. DAILY 14OCT2010	Tyco Electronics Corporation Harrisburg, PA 17105-3608			
DIMENSIONS: mm		CHK R. NARANG 14OCT2010	NAME ASSEMBLY, SOLDERLESS LED SOCKET, TYPE LS			
TOLERANCES UNLESS OTHERWISE SPECIFIED: 0 PLC ± 1 PLC ±0.2 2 PLC ±0.15 3 PLC ± 4 PLC ± ANGLES ±2° FINISH		APVD -	SIZE 108-2455			
MATERIAL		PRODUCT SPEC 114-13294	CAGE CODE A200779			
1		APPLICATION SPEC 114-13294	DRAWING NO C-2154235			
CUSTOMER DRAWING		WEIGHT -	RESTRICTED TO -			
SCALE 4:1		SHEET 3 OF 4		REV 3		



1471-9 (2/09)